

VERSALIFT

VTA-135-H

Pick-up mounted
telescopic platform



Full hydraulic controls



Walk-in bucket



Articulated boom



On & off road



1 kV certified low
voltage insulation



VERSALIFT

A **TIME** MANUFACTURING COMPANY

VTA-135-H on Isuzu D-Max



Fully hydraulic controls - simple to use and provides great precision.

Lightweight design, which allows it to be easily mounted onto a standard Isuzu D-Max without any suspension upgrades.

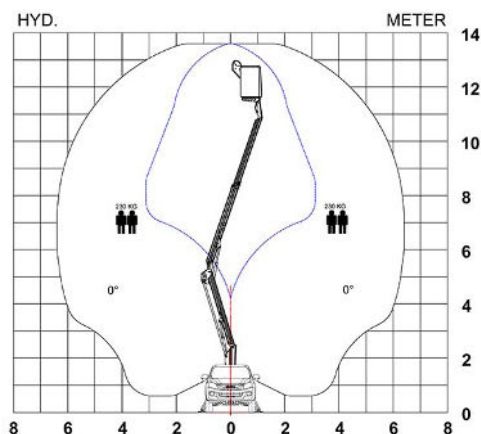
All components, including the extension cylinder, are protected inside the boom to prevent damage from external elements and impacts.

230kg bucket capacity without any restrictions within the entire working area.

■ Length: 5570 mm ■ Height: 2500 mm ■ Wheelbase: 3095 mm



Diagramme(s)



Options

- LED lights
- Aluminium cabinets for the chassis
- Reverse camera
- Outrigger pads with holders
- Safety stripes (red/white)
- Tilt sensor
- Flashing lights on the roof
- Parallelogram entrance (for the bucket)
- Electric emergency pump



The shaped profile ultra high strength steel booms provide improved rigidity, stiffness and performance



Double A-frame outriggers front and rear for compact setup



Emergency ground controls located within a separate compartment.



Easy to use fully hydraulic proportional control

Notes

Technical information is subject to change without prior notice. Images may show optional equipment. Installations and/or options may not be available in your specific region.

* Depending on the vehicle.

** Max payload with a driver, a passenger and a full tank of fuel (220 kg added to the installation weight).

*** Depending on the vehicle position

Distributor

Versalift International
Soendervang 3, 9640 Farsoe
Denmark

+45 9863 2433
sales@versalift.dk
versaliftinternational.com