

VERSALIFT

VT-54-190-LF

Chassis mounted
telescopic platform



PTO driven hydraulic pump



XPC controls with up to 4 actions at a time



Turret tailswing within the mirrors



Outriggers within the mirrors



1 kV certified low voltage insulation



VERSALIFT

A **TIME** MANUFACTURING COMPANY

VT-54-190-LF on MAN TGM



Features the sturdiest boom design available.

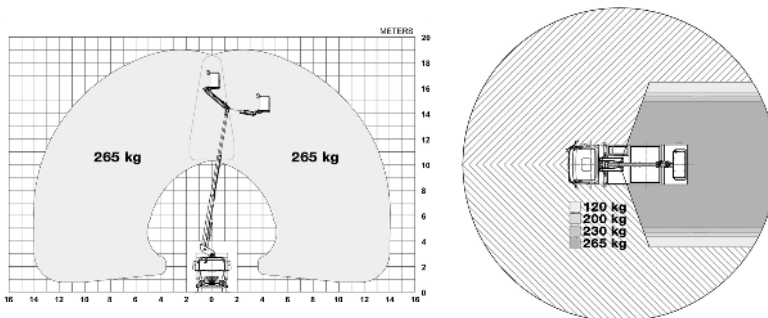
A vast list of optional equipment is available, allowing you to customize the VT to meet your specific demands.

The Smartbox toolbox solution is available in many shapes and sizes.

■ Length: 7,595 mm ■ Height: 3,985 mm ■ Wheelbase: 3,600 mm



Diagramme(s)

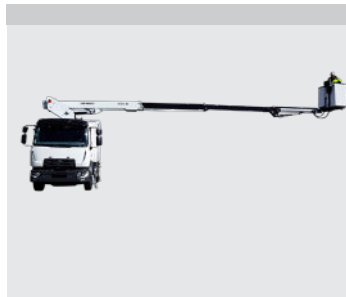


Options

- Workshop interior
- LED ceiling lights in the workshop module
- Bucket rotator (2 x 60°)
- Outrigger pads with holders
- Tow bar
- Power pack
- Removable LED spotlight
- Home function & limited working area without outriggers



e-Tech battery solution



Turret/knuckle tail swing and outriggers within the mirrors



Workshop interior (optional)



XPC controls with up to 4 actions at a time (2 per joystick)

Notes

Technical information is subject to change without prior notice. Images may show optional equipment. Installations and/or options may not be available in your specific region.
 * Depending on the vehicle.
 ** Max payload with a driver, a passenger and a full tank of fuel (260 kg added to the installation weight).
 *** Reduced outreach and max 230 kg bucket capacity.

Distributor

Versalift International
 Soendervang 3, 9640 Farsoe
 Denmark

+45 9863 2433
 sales@versalift.dk
 versaliftinternational.com