

# VERSALIFT

## VTL-145-F



Van mounted  
telescopic platform



Available for class B  
driving licence



LMC controls with  
variable outreach



Emergency lowering  
controls at the pedestal



Turret tailswing within  
the mirrors



Outriggers within the  
mirrors



# VERSALIFT

A **TIME** MANUFACTURING COMPANY

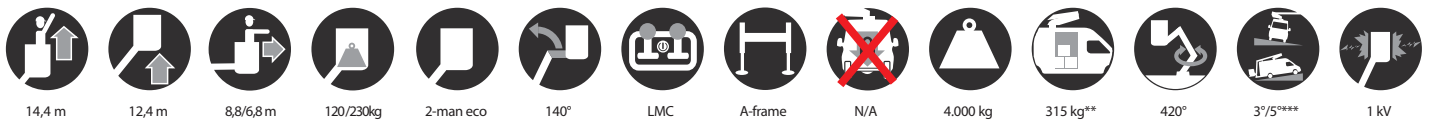
# VTL-145-F on Renault Master e-Tech



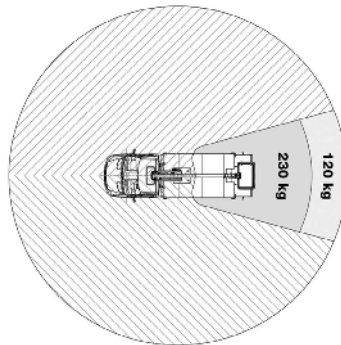
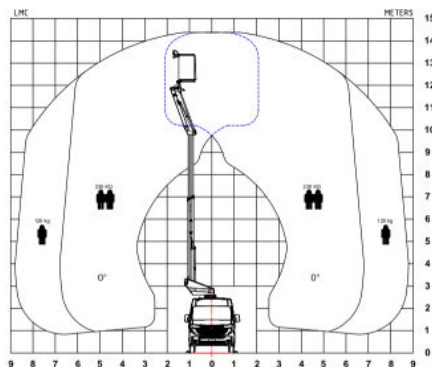
More payload for workshop, parts and tools.

Added stability delivering smooth and steady working conditions.

■ Length: 7010 mm ■ Height: 3260 mm ■ Wheelbase: 3585 mm



## Diagramme(s)



## Options

- Workshop interior
- LED ceiling lights (in the load area)
- Safety stripes (red/white)
- Removable LED spotlight
- Reversing camera
- Inverter
- Bucket rotator (2 x 90°)
- Limited working area without outriggers



Turret/knuckle tail swing and outriggers within the mirrors



The shaped profile ultra high strength steel booms provide improved rigidity, stiffness and performance



Workshop interior (optional)



LMC (Load Moment Controls): Variable outreach and up to 2 actions at a time (1 per joystick)

## Notes

Technical information is subject to change without prior notice. Images may show optional equipment. Installations and/or options may not be available in your specific region.

\* Depending on the vehicle.

\*\* Max payload with a driver, a passenger and a full tank of fuel (220 kg added to the installation weight).

\*\*\* Depending on the vehicle position

## Distributor

Versalift International  
Soendervang 3, 9640 Farsø  
Denmark

+45 9863 2433  
sales@versalift.dk  
versaliftinternational.com